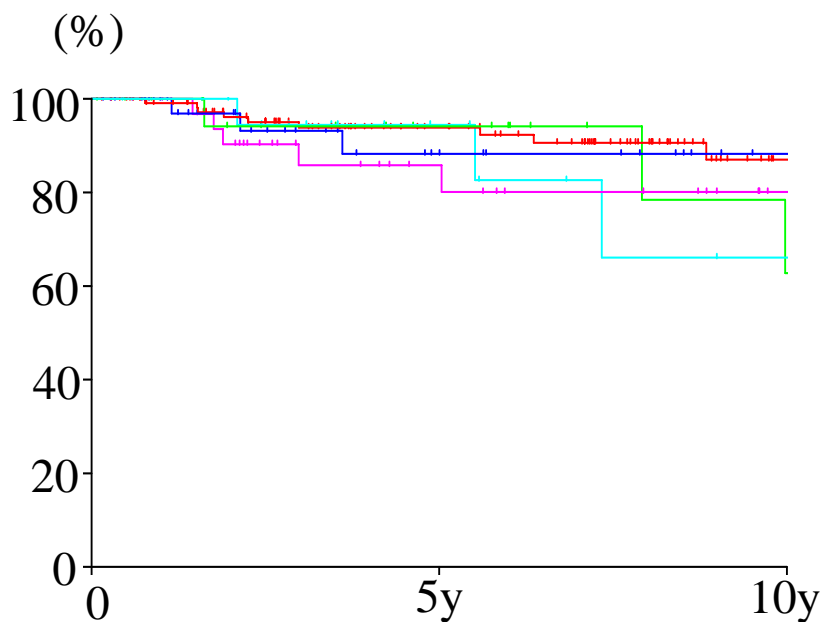


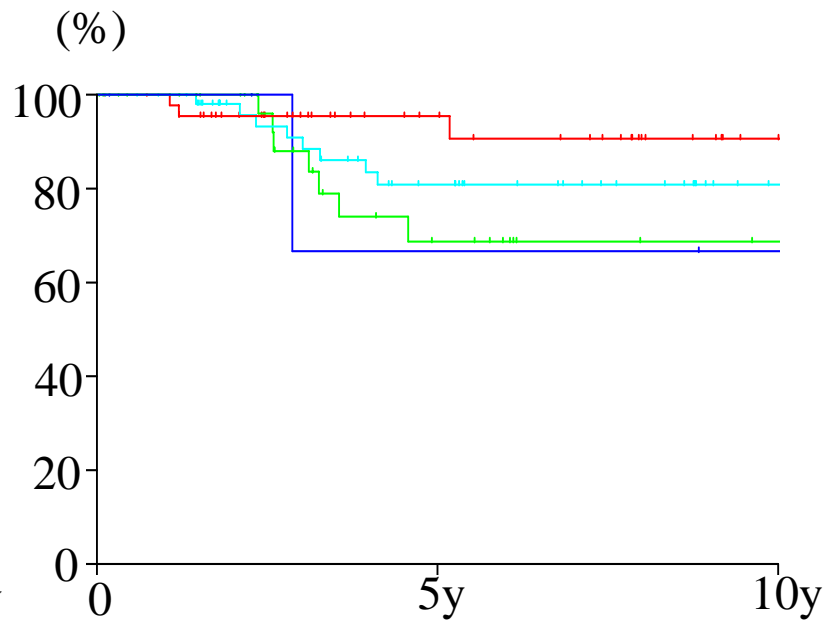
# 大腸癌 占居部位別(治癒切除例)

## 結腸癌



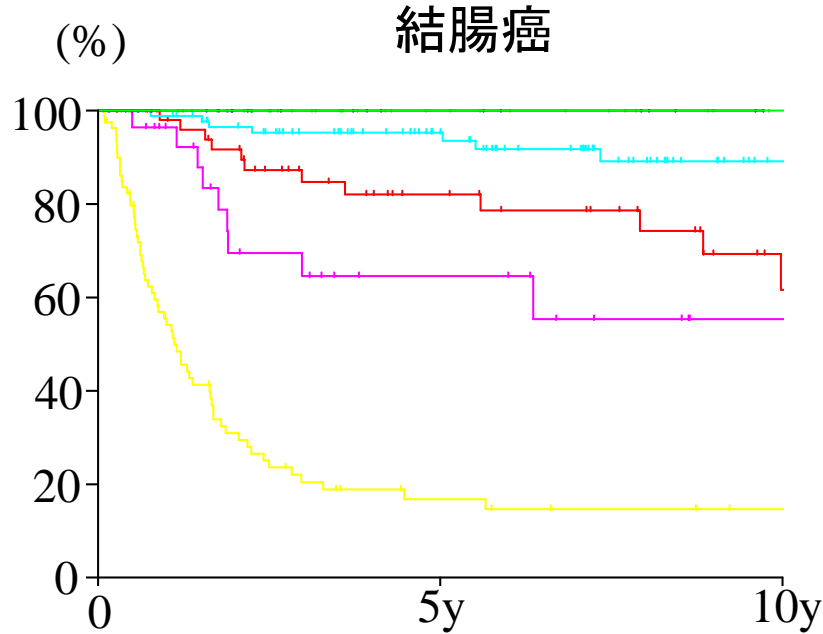
	5y	10y
V.C( 22)	94%	62%
A ( 42)	88%	88%
T ( 35)	86%	80%
D ( 23)	94%	66%
S (117)	94%	87%

## 直腸癌

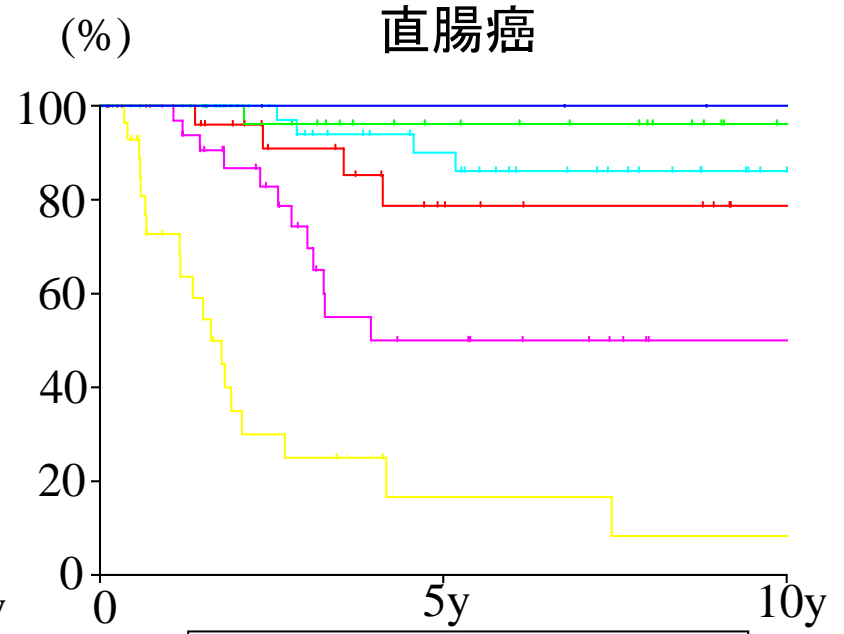


	5y	10y
Rs(46)	95%	91%
Ra(38)	69%	69%
Rb(55)	81%	81%
P ( 5)	67%	67%

# stage



	5y	10y
0	100%	100%
I	100%	100%
II	95%	89%
IIIa	82%	62%
IIIb	65%	55%
IV	17%	15%



	5y	10y
0	100%	100%
I	96%	96%
II	90%	86%
IIIa	79%	79%
IIIb	50%	50%
IV	17%	8%